

Teltronics Alarms Management

IP Telephony Monitoring At Its Finest.

Insight into the health and vitality of your voice and data network elements starts with a proactive alarms management solution.

IRISnGEN Version - v8.4.4.5144
Microsoft SQL Server 2008 (SP1) - 10.0.2531.0 (X64)

IRISnGEN 902 Alarm Reception Summary

Year to Date 3,753 Alarms Total including 12 Ignored and 1,753 Internal Alarms

Last Alarm ID #	Total Internals	Total Ignored	Total Alarms
67,971,205	206	0	1,206
67,972,400	399	9	1,399
67,973,303	903	3	903
67,973,308	245	0	245

Year 2011

Alarm	Keyword
67972514	unexpectedly
67972515	restarted
67972516	unexpectedly
8/11/2011 3:26:03 AM	
67972517	restarted
67972518	unexpectedly
67972520	unexpectedly
67972521	stopped
67972583	??
67972587	??

NET-PATH™
Power Battery Status Alarm

PROACTIVE REMOTE ALARMS MANAGEMENT.

Teltronics Alarms Management is intelligent monitoring and management at its finest, affording single-point visibility and control of all your monitored systems! This multi-platform solution consists of two major components:

IRISnGEN – a powerful, centralized management GUI application for your Network Operations Center (NOC) and **SEB NET-PATH** – a series of remote agent appliances that monitor your network components. Together, these items provide complete endpoint management for your voice and data components.



AT THE CENTER OF IT ALL

As businesses grow, the challenges of tracking & responding to maintenance problems grow too. IRISnGEN and SEB NET-PATH easily monitor millions of messages and maintain thousands of PBXs, voicemail systems, IVR systems, network elements and contact closure devices such as fire alarms or door sensors.



SEB NET-PATHm

A compact, cost-effective appliance designed for less complex or SMB environments. SEB NET-PATHm offers plenty of features for monitoring up to two serial devices, five network devices and much more.

- ▲ Support monitoring of 2 serial ports
- ▲ Support monitoring of 5 network ports
- ▲ 4 external contact sensors
- ▲ 16 MB of flash memory AND 64 MB SDRAM
- ▲ 2 SEB NET-PATHm's fit side-by-side in a 19" rack
- ▲ Built-in UPS for 15 minute backup power operation
- ▲ Lithium battery for real-time clock
- ▲ Universal 110/220 VAC power supply
- ▲ Internal modem

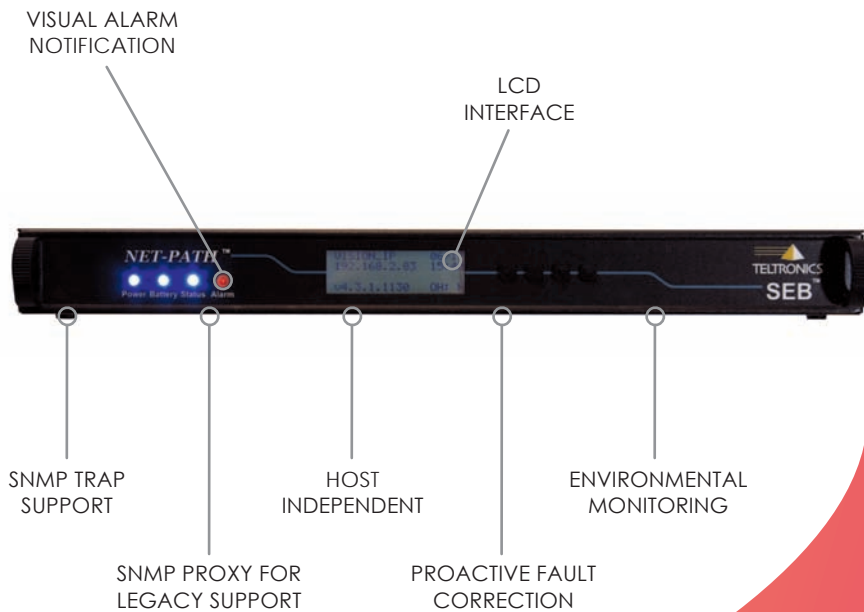


SEB NET-PATH

Teltronics' flagship alarms management agent. The SEB NET-PATH can monitor up to eight serial devices and twenty network devices, as well as internal and ambient temperature, DC voltage and other environmental conditions.

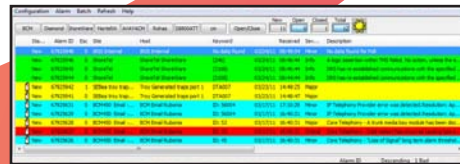
- ▲ Support monitoring of 4 or 8 serial ports
- ▲ Support monitoring of 20 network ports
- ▲ 8 or 16 external contact sensors
- ▲ 2 SPDT relays
- ▲ 32MB of flash memory AND 128 MB SDRAM
- ▲ Front panel LCD display
- ▲ Built-in UPS for 2 hours of operation
- ▲ Lithium battery for real-time clock
- ▲ Universal 110/220 VAC or DC power options
- ▲ Internal modem

~~Reactive~~
Proactive



BENEFITS AT A GLANCE.

- ▲ Protected capital investment with vendor independent architecture
- ▲ Proactive fault detection and resolution
- ▲ Potential crisis identified and avoided
- ▲ Issues resolved quickly and effectively
- ▲ Automated system expertise resolves issues quickly and effectively
- ▲ Lower phone costs with minimized calls into the NOC
- ▲ Enhanced efficiency and productivity
- ▲ Improved customer satisfaction
- ▲ Increased ROI
- ▲ Fewer truck rolls



SEB NET-PATH PLUS

In addition to all of the features of the SEB NET-PATH, this full featured appliance houses a secure router that boasts an ICSA compliant firewall technology highly resistant to intrusion attempts.

- ▲ VPN Capable
- ▲ IPSec, Peer-to-Peer and PPTP tunneling protocols
- ▲ 4 serial devices
- ▲ 20 network devices
- ▲ 8 or 16 external contact sensors
- ▲ 2 SPDT relays
- ▲ 32MB of flash memory AND 128 MB SDRAM
- ▲ Front panel LCD display
- ▲ Built-in UPS for 2 hours of operation
- ▲ Lithium battery for real-time clock
- ▲ Universal 110/220 VAC or DC power options
- ▲ Internal modem

IRISnGEN

IRISnGEN's centralized configuration, management, and communication facilities enable key efficiencies that save time and effort in on-boarding new systems and managing installed base.

- ▲ Element and Vendor independent monitoring
- ▲ Normalized, easy-to-read alarm format
- ▲ Immediate connectivity into on-site systems
- ▲ Alarm filtering and thresholding
- ▲ Multi-level alarms escalation
- ▲ Agent-based and Agent-less alarms monitoring
- ▲ Email-based alarms monitoring

SEB NET-PATH SPECIFICATIONS

FEATURE	DESCRIPTION	SEB II ¹	SEB NET-PATH	SEB NET-PATHm	SEB NET-PATH PLUS
Communication Ports	RS232, RJ45	5 ports	4 or 8 ports	2 ports	4 ports
Network	10/100 Base-T	-	✓	✓	✓ ²
Contact Sensors	Hard contact sensors (wet contacts)	✓	8 or 16 sensors	4 sensors	8 sensors
Modem	56 Kbps, Class 2 fax	internal or external modem	1 internal modem	1 internal modem	1 internal modem
Memory	Program storage / Data storage	512KB / 2MB	32MB Flash 128MB SDRAM	16MB Flash 64MB SDRAM	32MB Flash 128MB SDRAM
Segment Manager (option)	SNMP elements managed	-	10 or 20	5	10 or 20
Output Controls	Controlled output devices	-	2 SPDT relays 200 ma	-	2 SPDT relays 200 ma
Integrated Analog Sensors	For reporting temperature and voltage	-	1 temperature (50-110F) 1 DC voltage (0-60VDC)	-	1 temperature (50-110F) 1 DC voltage (0-60VDC)
System Power	Universal power supply / DC power supply	-	110/220 VAC 48 VDC	110/220 VAC	110/220 VAC 48 VDC
Battery Backup	Integrated UPS: maintains full function up to 2 hrs	✓	✓	✓	✓
RTC Sleep Battery	Long-term backup for real time clock	✓	✓	✓	✓
Diagnostics	LCD display: system information & diagnostics	-	✓	-	✓
Watchdog	Watchdog timer	✓	✓	✓	✓
Mounting Configuration	19" rack and desktop	desktop	both	desktop	both
Dimensions	Height x Width x Depth	3" x 9.75 x 12"	1.75 (UI)" x 18" x 10.5"	1.82" x 9.75 x 11"	1.75 (UI)" x 18" x 10.5"
Secure Router	VPN server	-	-	-	✓
Enhanced Authentication (option)	2-Factor token-based secure access	-	✓	✓	✓
Operating Environment	Temperature	Operating: 50-110 degrees F Non-operating: 20 - 140 degrees F Relative humidity, non-condensing: 20% - 80%			

IRISnGEN SPECIFICATIONS

SERVER HARDWARE <i>(includes 3 year basic warranty)</i>	UPS HARDWARE	COMMUNICATION HARDWARE	SOFTWARE
Dell PowerEdge R610-Rackmount	ALI Elite UPS, Rack Mount XL1500	8PT PCI Express PERLE Card w/ DB25 Pin Male Fanout Cable	MS Windows Server 2003 or 2008
Intel Xeon E5620 Processor	SNMP Interface Port, ALI Elite	Modem - 56K External	MS SQL Server 2005 or 2008
4GB Memory - 1333MHz		Maintenance Modem V.90 56k PCI Internal	
2 - 250GB SATA with RAID 1controller			
Dual embedded NICs			
DVD ROM			
Keyboard & Mouse; 17" LCD Monitor			

¹ Manufacturer discontinued product. Listed for comparison purposes only.

² 2 LAN / 1 WAN